



SOST	BUSSOLA GUIDA TIPO "SOST"	8-6
<i>Guide bush type "SOST" • Führungsbuchsen typ "SOST"</i>		
SOBF	BUSSOLA GUIDA TIPO "SOBF"	8-8
<i>Guide bush type "SOBF" • Führungsbuchsen typ "SOBF"</i>		
RGBF	BUSSOLA GUIDA TIPO "RGBF"	8-10
<i>Guide bush type "RGBF" • Führungsbuchsen typ "RGBF"</i>		
SOVM	BUSSOLA GUIDA TIPO "SOVM"	8-11
<i>Guide bush type "SOVM" • Führungsbuchsen typ "SOVM"</i>		
SEGB	BUSSOLA GUIDA TIPO "SEGB"	8-12
<i>Guide bush type "SEGB" • Führungsbuchsen typ "SEGB"</i>		
SEGBK	BUSSOLA GUIDA TIPO "SEGBK"	8-13
<i>Guide bush type "SEGBK" • Führungsbuchsen typ "SEGBK"</i>		
SEGBL-SEGBLH	BUSSOLA GUIDA TIPO "SEGBL-SEGBLH"	8-14
<i>Guide bush type "SEGBL-SEGBLH" • Führungsbuchsen typ "SEGBL-SEGBLH"</i>		
TSOEG	BUSSOLA GUIDA TIPO "TSOEG"	8-15
<i>Guide bush type "TSOEG" • Führungsbuchsen typ "TSOEG"</i>		
DIN9834	BUSSOLA GUIDA TIPO "DIN9834"	8-16
<i>Guide bush type "DIN9834" • Führungsbuchsen typ "DIN9834"</i>		
SOSG	BUSSOLA GUIDA TIPO "SOSG"	8-17
<i>Guide bush type "SOSG" • Führungsbuchsen typ "SOSG"</i>		
T1125	BUSSOLA GUIDA TIPO "T1125"	8-19
<i>Guide bush type "T1125" • Führungsbuchsen typ "T1125"</i>		
T1126	BUSSOLA GUIDA TIPO "T1126"	8-20
<i>Guide bush type "T1126" • Führungsbuchsen typ "T1126"</i>		
EB1BG	BUSSOLA GUIDA BRONZO E GRAFITE INTEGRALE	8-21
<i>Bronze and graphite guide bush • Führungsbuchsen Bronze und Graphit</i>		
EB3BG	BUSSOLA GUIDA IN BRONZO E GRAFITE SPALLATA	8-22
<i>Bronze and graphite guide bush with centring collar • Führungsbuchsen mit Zentrierbund aus Bronze und Graphit</i>		
SOB	BUSSOLA GUIDA TIPO "SOB"	8-23
<i>Guide bush type "SOB" • Führungsbuchsen typ "SOB"</i>		
TGPBG	GUIDA PIANA AUTOLUBRIFICANTE	8-26
<i>Self lubricating flat guide • Flachführung</i>		
TGLBG	GUIDA A "L" AUTOLUBRIFICANTE	8-27
<i>Self lubricating L-guide • L-Selbstschmierführungs</i>		
SOML	PIASTRA TIPO "SOML"	8-28
<i>Slide plate type "SOML" • Schieberplatte typ "SOML"</i>		

>>

< <

SOLP	PIASTRA TIPO "SOLP"	8-29
	<i>Slide plate type "SOLP" • Schieberplatte typ "SOLP"</i>	
TLP	PIASTRE TIPO "TLP"	8-30
	<i>Slide plate type "TLP" • Schieberplatte typ "TLP"</i>	
SOD	PIASTRA TIPO "SOD"	8-31
	<i>Slide plate type "SOD" • Schieberplatte typ "SOD"</i>	
UWP	PIASTRA TIPO "UWP"	8-32
	<i>Slide plate type "UWP" • Schieberplatte typ "UWP"</i>	
SOVP	PIASTRA TIPO "SOVP"	8-33
	<i>Slide plate type "SOVP" • Schieberplatte typ "SOVP"</i>	
VKL	PIASTRA TIPO "VKL"	8-34
	<i>Slide plate type "VKL" • Schieberplatte typ "VKL"</i>	
SESW-SESWT	PIASTRA TIPO "SESW-SESWT"	8-35
	<i>Slide plate type "SESW-SESWT" • Schieberplatte typ "SESW-SESWT"</i>	
SGLW-SGLWN	PIASTRA TIPO "SGLW-SGLWN"	8-36
	<i>Slide plate type "SGLW-SGLWN" • Schieberplatte typ "SGLW-SGLWN"</i>	
SGLXS	PIASTRA TIPO "SGLXS"	8-37
	<i>Slide plate type "SGLXS" • Schieberplatte typ "SGLXS"</i>	
SGBT	PIASTRA TIPO "SGBT"	8-38
	<i>Slide plate type "SGBT" • Schieberplatte typ "SGBT"</i>	
SGBD	PIASTRA TIPO "SGBD"	8-39
	<i>Slide plate type "SGBD" • Schieberplatte typ "SGBD"</i>	
SOL	PIASTRA TIPO "SOL"	8-40
	<i>Slide plate type "SOL" • Schieberplatte typ "SOL"</i>	
SOVL	PIASTRA TIPO "SOVL"	8-41
	<i>Slide plate type "SOVL" • Schieberplatte typ "SOVL"</i>	
SGLX	PIASTRA TIPO "SGLX"	8-42
	<i>Slide plate type "SGLX" • Schieberplatte typ "SGLX"</i>	
T3143	PIASTRA PIATTA UNIDIREZIONALE AUTOLUBRIFICANTE	8-43
	<i>One-sided self-lubricating flat slide plate • Schieberplatte einseitig, wartungsfrei</i>	
T3119	PIASTRA PIATTA UNIDIREZIONALE AUTOLUBRIFICANTE	8-44
	<i>One-sided self-lubricating flat slide plate • Schieberplatte einseitig, wartungsfrei</i>	
T3176	PIASTRA DI SCORRIMENTO AUTOLUBRIFICANTE	8-45
	<i>Self-lubricating flat guiding stock • Gleitplatte wartungsfrei</i>	
KOCU-S	CARRELLO TIPO "KOCU-S"	8-46
	<i>Inclined ejector core unit type "KOCU-S" • Bolzenführung typ "KOCU-S"</i>	

> >

< <

KOCU-F	CARRELLO TIPO "KOCU-F"	8-47
<i>Diltes slide unit for loose core "F" type "KOCU-F" • Bolzenführung typ "KOCU-F"</i>		
KOCU-FKT	CARRELLO TIPO "KOCU-FKT"	8-48
<i>Inclined ejector core unit type "KOCU-FKT" with cooling • Bolzenführung typ "KOCU-FKT"</i>		
RCSUF	CARRELLO TIPO "RCSUF"	8-49
<i>Slide unit inclined pin fixing type "RCSUF" • Bolzenführung typ "RCSUF"</i>		

BUSSOLA GUIDA TIPO "SOST"

Materiale: bronzo e grafite

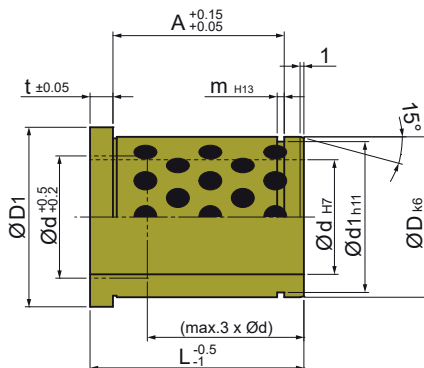
Material: bronze graphite

Werkstoff: bronze graphit

Durezza: HB 210÷240

Hardness:

Härte:



d	D	L	m	D1	d1	A	t
9	14	12	1,1	16	13,4	6,6	3
		17				11,6	
		22				16,6	
		27				21,6	
		36				30,6	
10	14	12	1,1	16	13,4	6,6	3
		17				11,6	
		22				16,6	
		36				30,6	
12	18	17	1,3	23	17	8,3	6
		22				13,3	
		27				18,3	
		36				27,3	
14	20	17	1,3	25	19	8,3	6
		22				13,3	
		27				18,3	
		36				27,3	
		46				37,3	
		56				47,3	
15	20	17	1,3	25	19	8,3	6
		22				13,3	
		27				18,3	
		36				27,3	
		46				37,3	
		56				47,3	
16	22	17	1,3	27	21	8,3	6
		22				13,3	
		27				18,3	
		36				27,3	
		46				37,3	
		56				47,3	

d	D	L	m	D1	d1	A	t
18	26	17	1,3	31	24,9	8,3	6
		22				13,3	
		27				18,3	
		36				27,3	
		46				37,3	
		56				47,3	
20	26	17	1,3	31	24,9	8,3	6
		22				13,3	
		27				18,3	
		36				27,3	
		46				37,3	
		56				47,3	
22	30	17	1,6	35	28,6	7,6	6
		22				12,6	
		27				17,6	
		36				26,6	
		46				36,6	
		56				46,6	
		66				56,6	
		86				76,6	
24	30	17	1,6	35	28,6	7,6	6
		22				12,6	
		27				17,6	
		36				26,6	
		46				36,6	
		56				46,6	
		66				56,6	
		86				76,6	

Esempio d'ordine: SOST = d x D x L

Order example:

Bestellbeispiel:

>>

BUSSOLA GUIDA TIPO "SOST"

Materiale: bronzo e grafite

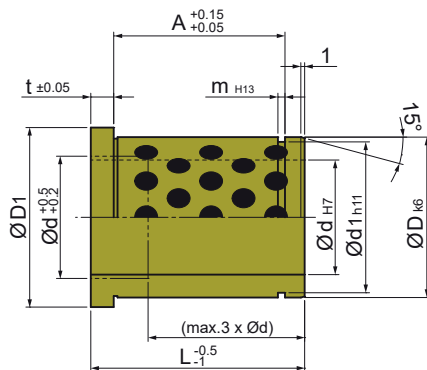
Material: bronze graphite

Werkstoff: bronzegraphit

Durezza: HB 210÷240

Hardness:

Härte:



< <

d	D	L	m	D1	d1	A	t
30	42	27	1,85	47	39,5	15,85	6
		36				24,85	
		46				34,85	
		56				44,85	
		66				54,85	
		76				64,85	
		86				74,85	
		96				84,85	
		116				104,85	
32	42	27	1,85	47	39,5	15,85	6
		36				24,85	
		46				34,85	
		56				44,85	
		66				54,85	
		76				64,85	
		86				74,85	
		96				84,85	
		116				104,85	
40	54	56	2,15	60	51	40,15	10
		66				50,15	
		76				60,15	
		86				70,15	
		96				80,15	
		116				100,15	
		136				120,15	
		156				-	

d	D	L	m	D1	d1	A	t
42	54	56	2,15	60	51	40,15	10
		66				50,15	
		76				60,15	
		86				70,15	
		96				80,15	
		116				100,15	
		136				120,15	
		156				-	
		176				-	
50	66	76	-	72	-	70,15	10
		86				80,15	
		96				90,15	
		116				100,15	
		136				120,15	
		156				-	
60	80	96	-	86	-	80,15	20
		116				90,15	
		136				100,15	
		156				120,15	

Esempio d'ordine: SOST = d x D x L

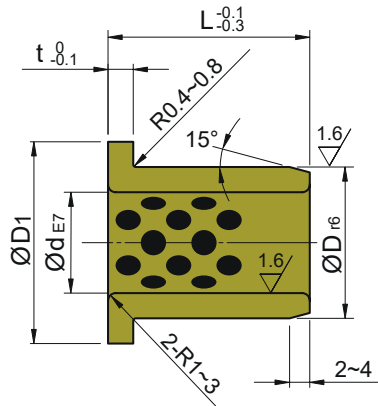
Order example:

Bestellbeispiel:

BUSSOLA GUIDA TIPO "SOBF"

Materiale: bronzo e grafite
Material: bronze graphite
Werkstoff: bronze graphit

Durezza: HB 210÷240
Hardness:
Härte:



d	L	D	D1	t
8	10	12	20	2
	12			
	15			
10	10	14	22	2
	12			
	15			
	17			
	20			
12	10	18	25	3
	12			
	15			
	20			
	25			
13	10	19	26	3
	12			
	15			
	20			
	25			
14	15	20	27	3
	20			
	25			
15	10	21	28	3
	12			
	15			
	20			
	25			
	30			

d	L	D	D1	t
16	12	22	29	3
	15			
	18			
	20			
	23			
	25			
	30			
18	15	24	32	3
	20			
	25			
	30			
	35			
20	15	30	40	5
	20			
	25			
	30			
	35			
	40			
25	15	35	45	5
	20			
	25			
	30			
	35			
	40			

Esempio d'ordine: SOBF = d x L
Order example:
Bestellbeispiel:

>>

BUSSOLA GUIDA TIPO "SOBF"

Materiale: bronzo e grafite

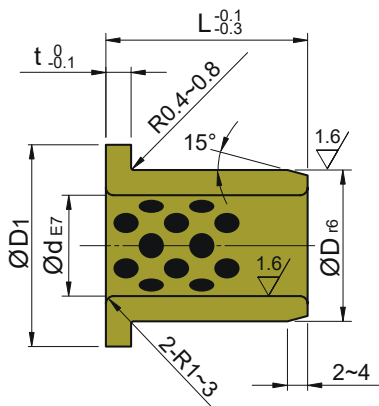
Material: bronze graphite

Werkstoff: bronze graphit

Durezza: HB 210+240

Hardness:

Härte:



< <

d	L	D	D1	t
30	20	40	50	5
	25			
	30			
	35			
	40			
35	20	45	60	5
	25			
	30			
	35			
	40			
40	20	50	65	5
	25			
	30			
	35			
	40			
45	30	55	70	5
	35			
	40			
	50			
	60			
50	30	60	75	5
	35			
	40			
	50			
	60			

d	L	D	D1	t
55	40	65	80	5
	60			
60	40	75	90	7,5
	50			
	80			
70	50	85	105	7,5
	80			
80	60	100	120	10
	80			
	100			
90	60	110	130	10
	80			
100	80	120	150	10
	100			
120	80	140	170	10
	100			
130	80	150	180	10
	100			
140	80	160	190	10
	100			
150	100	170	200	10
	120			
160	100	180	210	10
	120			

Esempio d'ordine: SOBF = d x L

Order example:

Bestellbeispiel:

BUSSOLA GUIDA TIPO "RGBF"

Materiale: bronzo e grafite

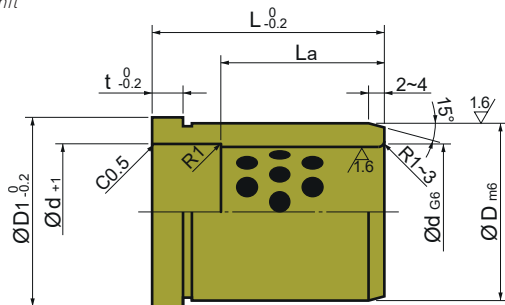
Material: bronze graphite

Werkstoff: bronze graphite

Durezza: HB 210÷240

Hardness:

Härte:



d	L	D	D1	t	La
12	19	18	25	4	19
	24				24
	29				29
	34				34
16	19	25	30	6	19
	24				24
	29				29
	34				30
	39				30
20	24	30	35	8	24
	29				29
	34				34
	39				39
	49				40
	59				40
25	24	35	40	8	24
	29				29
	34				34
	39				39
	49				49
	59				50
	69				50
30	29	42	47	10	29
	34				34
	39				39
	49				49
	59				59
	69				60
	79				60

d	L	D	D1	t	La			
35	39	48	54	10	39			
	49				49			
	59				59			
	69				69			
	79				70			
40	79	55	61	10	70			
	89				70			
	99				80			
	109				80			
	39							39
	49							49
59				59				
50	69	70	76	12	69			
	79				79			
	89				89			
	99				90			
	109				90			
	119				90			
	99							99
60	109	80	86	15	109			
	119				110			
	129				110			
	149				110			
								110

Esempio d'ordine: RGBF = d x L

Order example:

Bestellbeispiel:

BUSSOLA GUIDA TIPO "SOVM"

Materiale: bronzo e grafite

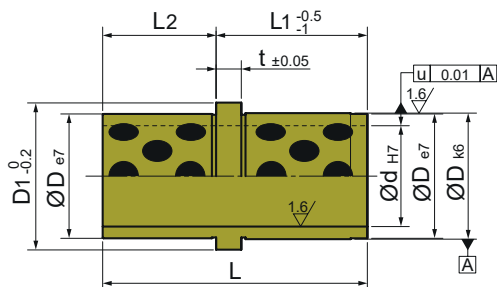
Material: bronze graphite

Werkstoff: bronze graphit

Durezza: HB 210+240

Hardness:

Härte:



d	L1	D	D1	L	L2	t
9	9	14	16	15	6	3
10	17	14	16	26	9	3
14	17	20	25	26	9	6
15	17	20	25	26	9	6
	22	20	25	39	17	6
18	22	26	31	39	17	6
20	22	26	31	39	17	6
	27	26	31	49	22	6
22	27	30	35	49	22	6
24	27	30	35	49	22	6
	36	30	35	63	27	6
30	36	42	47	63	27	6
32	36	42	47	63	27	6
	46	42	47	73	27	6

Esempio d'ordine: SOVM = d x L1

Order example:

Bestellbeispiel:

BUSSOLA GUIDA TIPO "SEGB"

Materiale: bronzo e grafite

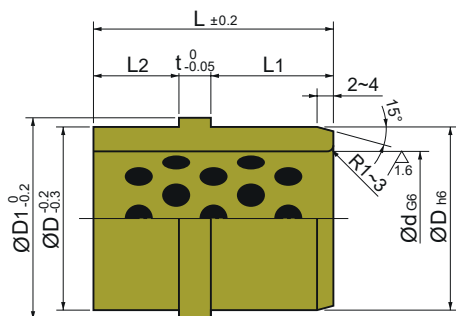
Material: bronze graphite

Werkstoff: bronze graphit

Durezza: HB 210÷240

Hardness:

Härte:



d	D	L	D1	L1	L2	t
16	25	26	30	12	10	4
		28		14		
		33		19		
		38		24		
20	30	26	35	12	10	4
		28		14		
		33		19		
		38		24		
25	35	26	40	12	10	4
		28		14		
		33		19		
		38		24		
30	40	33	45	14	15	4
		38		19		
		43		24		
35	46	38	50	19	15	4
		43		24		
		48		29		
40	52	48	57	24	20	4
		53		29		
		48		67		
53	29					

Esempio d'ordine: SEGB = d x D x L

Order example:

Bestellbeispiel:

BUSSOLA GUIDA TIPO "SEGBK"

Materiale: bronzo e grafite

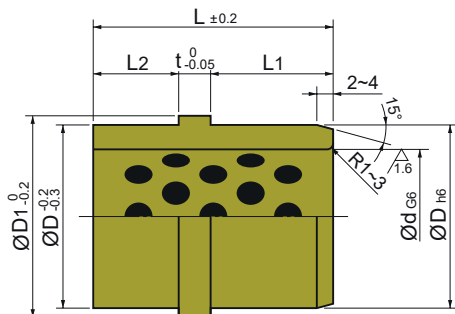
Material: bronze graphite

Werkstoff: bronze graphit

Durezza: HB 210+240

Hardness:

Härte:



d	L	D	D1	L1	L2	t
25	33	35	40	19	6	8
	38	35	40	24	6	
30	47	42	47	24	15	8
	48	40	45	29	11	
	52	42	47	29	15	
35	63	45	50	39	16	8
40	57	55	60	24	25	8
	60	50	55	32	20	
	67	55	60	29	30	
	70	50	55	42	20	
	78	50	55	49	21	
45	88	55	60	59	21	8
	98	55	60	69	21	
50	67	62	67	29	30	8
	87	62	67	39	40	
60	67	74	82	29	30	8
	87	74	82	39	40	

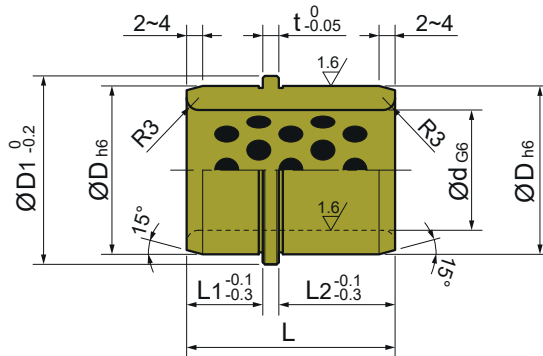
Esempio d'ordine: SEGBK = d x L

Order example:

Bestellbeispiel:

Materiale: bronzo e grafite
Material: bronze graphite
Werkstoff: bronze graphite

Durezza: HB 210÷240
Hardness:
Härte:



SEGBL

d	L	D	D1	L1	L2	t
20	33	30	34	10	19	4
	37			14	19	
25	33	35	40	10	19	4
	37			14	19	
	42			14	24	
30	33	42	47	10	19	4
	37			14	19	
	42			14	24	
	52			19	29	
35	42	48	53	14	24	4
	52			19	29	
	68			25	39	
40	43	55	61	11	24	8
	53			16	29	
	68			21	39	
50	53	65	71	16	29	8
	68			21	39	

SEGBLH

d	L	D	D1	L1	L2	t
40	48	55	61	16	24	8
	58			21	29	
50	58	65	71	21	29	8
	78			31	39	
60	78	76	84	31	39	8
	98			41	49	

Esempio d'ordine: SEGBL-SEGBLH = d x L

Order example:

Bestellbeispiel:

BUSSOLA GUIDA TIPO "TSOEG"

Materiale: bronzo e grafite

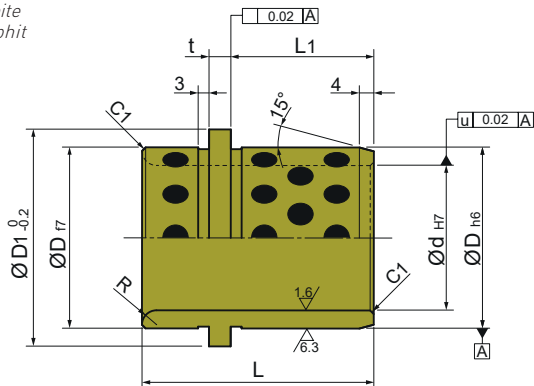
Material: bronze graphite

Werkstoff: bronze graphit

Durezza: HB 210+240

Hardness:

Härte:



Codice	d	D	D1	L	L1	t	R
TSOEG-25	25	35	40	43	24	7,5	3
TSOEG-30	30	42	47	43	24	7,5	3
TSOEG-40.1	40	50	59,9	60	35,5	6	4
TSOEG-40.2	40	50	59,9	64	39,5	6	4
TSOEG-50.3	50	63	71,9	77	44,5	8	4
TSOEG-50.4	50	63	71,9	92	55,5	8	4
TSOEG-60	60	80	86	78	49	7,5	3
TSOEG-63.5	63	80	89,9	95	55,5	8	4
TSOEG-63.6	63	80	89,9	100	62,5	8	4
TSOEG-63.7	63	80	89,9	108	62,5	8	4

Esempio d'ordine: Codice

Order example:

Bestellbeispiel:

Materiale: bronzo e grafite

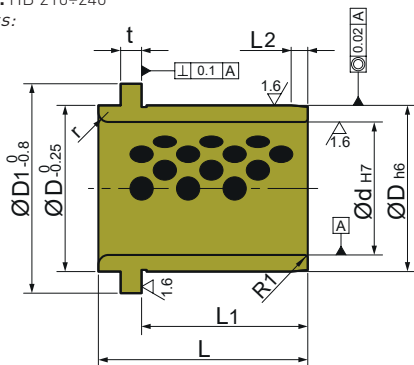
Material: bronze graphite

Werkstoff: bronze graphit

Durezza: HB 210÷240

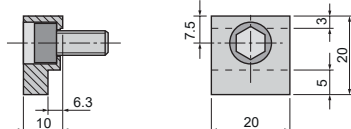
Hardness:

Härte:



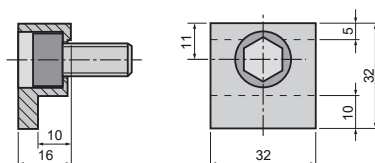
TSBG2020

da 25 a 50



TSBG3232

da 63 a 160



Codice	d	D	L	D1	L1	L2	t	r
DIN9834-025	25	32	40	40	30	3	6,3	3
DIN9834-032	32	40	50	50	38	4	6,3	3
DIN9834-040	40	50	63	63	48	5	6,3	3
DIN9834-050	50	63	71	71	54	6,3	6,3	5
DIN9834-063	63	80	80	90	61	8	10	6
DIN9834-080	80	100	100	112	78	10	10	8
DIN9834-100	100	125	125	140	104	12,5	10	10
DIN9834-125	125	160	160	180	130	16	10	12
DIN9834-160	160	200	200	220	168	16	10	18

Esempio d'ordine: Codice

Order example:

Bestellbeispiel:

BUSSOLA GUIDA TIPO "SOSG"

Materiale: bronzo e grafite

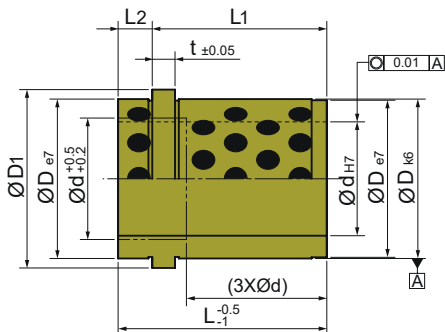
Material: bronze graphite

Werkstoff: bronze graphit

Durezza: HB 210+240

Hardness:

Härte:



BRONZO E GRAFITE
Bronze graphite
Bronze graphit

d	D	L1	D1	L	L2	t
9	14	12	16	15	3	3
		17		20		
		22		25		
		27		30		
10	14	36	16	39	3	3
		12		15		
		17		20		
		22		25		
14	20	27	25	30	9	6
		36		39		
		46		55		
		56		65		
		17		26		
		22		31		
15	20	27	25	36	9	6
		36		45		
		46		55		
		56		65		
		17		26		
18	26	22	31	31	9	6
		27		36		
		36		45		
		46		55		
		56		65		
		66		75		

d	D	L1	D1	L	L2	t
20	26	17	31	26	9	6
		22		31		
		27		36		
		36		45		
		46		55		
		56		65		
22	30	66	35	75	9	6
		17		26		
		22		31		
		27		36		
		36		45		
		46		55		
		56		65		
		66		75		
24	30	76	35	85	9	6
		86		95		
		17		26		
		22		31		
		27		36		
		36		45		
		46		55		
		56		65		
66	75					
24	30	76	35	85	9	6
		86		95		
		17		26		
		22		31		

>>

Esempio d'ordine: SOSG = d x D x L1

Order example:

Bestellbeispiel:

BUSSOLA GUIDA TIPO "SOSG"

Materiale: bronzo e grafite

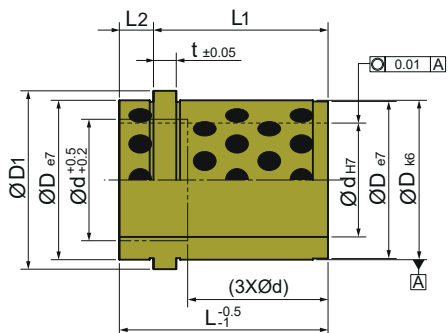
Material: bronze graphite

Werkstoff: bronze graphit

Durezza: HB 210÷240

Hardness:

Härte:



< <

d	D	L1	D1	L	L2	t
30	42	27	47	36	9	6
		36		45		
		46		55		
		56		65		
		66		75		
		76		85		
		86		95		
		96		105		
		116		125		
32	42	27	47	36	9	6
		36		45		
		46		55		
		56		65		
		66		75		
		76		85		
		86		95		
40	54	56	60	68	12	10
		66		78		
		76		88		
		86		98		
		96		108		
		116		128		
		136		148		
156	168					

d	D	L1	D1	L	L2	t
42	54	56	60	68	12	10
		66		78		
		76		88		
		86		98		
		96		108		
		116		128		
		136		148		
		156		168		

Esempio d'ordine: SOSG = d x D x L1

Order example:

Bestellbeispiel:

BUSSOLA GUIDA TIPO "T1125"

Materiale: bronzo e grafite

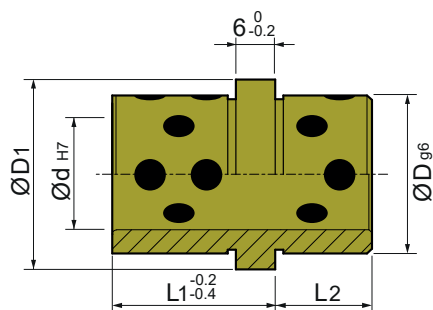
Material: bronze graphite

Werkstoff: bronze graphit

Durezza: HB 210+240

Hardness:

Härte:



d	L2	L1	D	D1
10	9	12	14	17
	9	17		
12	9	17	16	19
	12	17		
14	12	17	18	21
	12	22		
	17	22		
18	12	17	24	27
	12	22		
	17	22		
	17	27		
20	17	22	26	29
	22	27		
22	17	22	28	31
	22	27		
24	17	22	30	33
	17	27		
	22	27		
30	27	36	38	41
	27	46		
	36	46		
	36	46		
40	36	46	48	51

Esempio d'ordine: T1125 = d x L2 x L1

Order example:

Bestellbeispiel:

T1126

Guide bush type "T1126"
Führungsbuchsen typ "T1126"

BUSSOLA GUIDA TIPO "T1126"

Materiale: bronzo e grafite

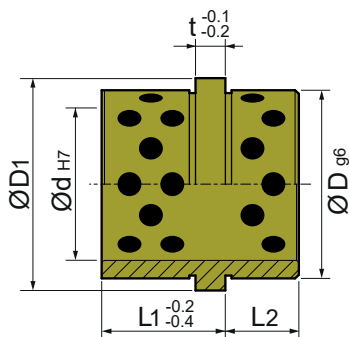
Material: bronze graphite

Werkstoff: bronze graphit

Durezza: HB 210÷240

Hardness:

Härte:



d	L2	L1	D	D1	t
24	6	20	32	36	5
	9	17			
	12	17			
36	6	24	44	48	5
	12	17			
	12	22			
	17	22			
48	10	30	58	62	6
	17	22			
	17	27			

Esempio d'ordine: T1126 = d x L2 x L1

Order example:

Bestellbeispiel:

BUSSOLA GUIDA BRONZO E GRAFITE INTEGRALE

Materiale: bronzo e grafite

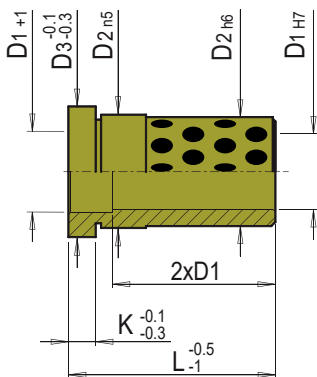
Material: bronze graphite

Werkstoff: bronze graphit

Durezza: HB 210÷240

Hardness:

Härte:



BRONZO E GRAFITE
Bronze graphite
Bronze graphit

D1	12	14	16	18	20	25	32	40	50	60
D2	18	20	22	26	28	34	40	48	60	74
D3	22	24	26	30	32	38	45	52	65	84
K	5	5	5	5	6	7	7	8	10	12
L	22	•	•	•	•	•				
	26	•	•	•	•	•	•			
	36	•	•	•	•	•	•	•		
	46	•	•	•	•	•	•	•	•	
	56	•	•	•	•	•	•	•	•	
	66			•	•	•	•	•	•	
	76			•	•	•	•	•	•	
	86			•	•	•	•	•	•	
	96			•	•	•	•	•	•	
	106					•	•	•	•	
	116					•	•	•	•	•
	126					•	•	•	•	•
	136							•	•	•
146									•	
176										•
196										•

Esempio d'ordine: EB1BG = D1 x L

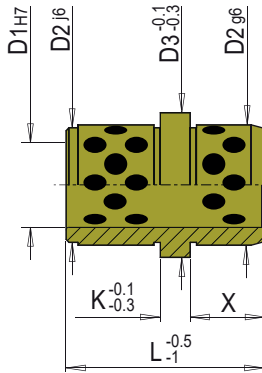
Order example:

Bestellbeispiel:

BUSSOLA GUIDA IN BRONZO E GRAFITE SPALLATA

Materiale: bronzo e grafite
Material: bronze graphite
Werkstoff: bronze graphit

Durezza: HB 210÷240
Hardness:
Härte:



D1	16	18	20	25	32	40	50*	
D2	22	26	28	34	40	48	60*	
D3	26	30	32	38	45	52	65*	
X	16	16	16	16	25	32	32*	
K	5	5	6	7	7	8	10*	
L	32	•	•	•	•			
	40	•	•	•	•			
	50					•		
	65					•	•	
	70							•
	80						•	
90							•	

Esempio d'ordine: EB3BG = D1 x L
Order example:
Bestellbeispiel:

* a richiesta / on request / auf Anfrage

BUSSOLA GUIDA TIPO "SOB"

Materiale: bronzo e grafite

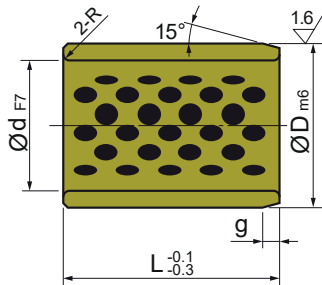
Material: bronze graphite

Werkstoff: bronze graphit

Durezza: HB 210+240

Hardness:

Härte:



d	D	L	R	g
6	10	12	0,5	1
8	12	8	0,5	1
		10		
		12		
		15		
10	14	8	0,5	1
		10		
		12		
		15	1	
		20		
		15		
12	18	8	0,5	2
		10		
		12	1	
		15		
		16		
		19		
		20		
		25		
30				
13	19	10	0,5	2
		12		
		15	1	
		16		
		20		
25				
14	20	10	0,5	2
		12		
		15	1	
		20		
		25		
		30		
15	21	10	0,5	2
		12		
		15	1	
		16		
		20		
		30		

d	D	L	R	g
16	22	10	0,5	2
		12		
		15		
		16		
		19	1	
		20		
		25		
30				
35				
40				
17	23	15	1	2
18	24	10	1	2
		12		
		15		
		16		
		20		
		25		
		30		
		35		
40				
19	26	15	1	2
20	28	10	2	
		12		
		15		
		16		1
		19		
		20		
		25		
		30		2
		35		
		40		
50				

d	D	L	R	g	
20	30	10	1	2	
		12			
		15			
		16			
		20	2		
		25			
		30			
		35			
		40			
		70			
22	32	12	1	2	
		15			
		20			
		25			
		30			
25	35	12	1	2	
		15			
		16			
		20			
		25	2		
		30			
		35			
		40			
		50			
		60			
		12			1
		15			
16					
20					
35	50	25	2		
		30			
		35			
		40			
		40			
		40			
		50			

d	D	L	R	g
28	38	20	1	2
		25		
		30	2	
		40		
		12		
15				
20				
25	2			
30				
35				
40				
50				
60				
30	40	12	2	2
		15		
		20		
		25		
		30		
		35		
		40		
		50		
		60		
		12	1	
15				
20				
25	2			
30				
35				
40				
50				
60				
32	42	15	1	2
		20		
		30	2	
		30		
		40		

>>

Esempio d'ordine: SOB = d x D x L

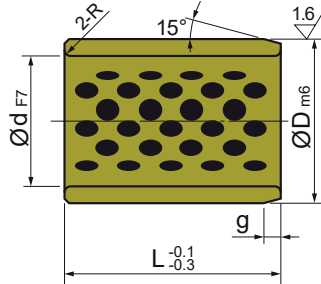
Order example:

Bestellbeispiel:

BUSSOLA GUIDA TIPO "SOB"

Materiale: bronzo e grafite
Material: bronze graphite
Werkstoff: bronze graphit

Durezza: HB 210÷240
Hardness:
Härte:



< <

d	D	L	R	g	d	D	L	R	g	d	D	L	R	g	d	D	L	R	g
		20	1				30					30	2	2			40	2	2
		25					35					40					50		
		30				55	40					50					60	3	3
		35	2				50					60					70		
		40					60					70	3	3			80		
		50					30					80					30		
		60					35					100					35	2	2
35		15	1.5	2		56	40					30					40		
		20	1				50	2	2			35	2	2			50		
		25					60					40					60		
		30					30					50					70		
		35	2				35					60	3	3			80		
		40					40					70					100		
		50					50					30					50		
		60					60					35	2	2			60		
38	48	30	2	2			70					40					70		
		40					80					50					80		
		15	1				20	1				60					90		
		20					30		2			70	3	3			100		
		25					35	2				80					50		
		30					40					100					60		
		35	2				50					30					70		
		40					60					35	2	2			80		
		50					70	3	3			40					90		
		60					80					50					100		
		70	2				30					60					50		
		80					35	2	2			70	3	3			60		
		15	1				40					80					70		
		25					50					100					80		
		30					60					30					90		
		35	2				70					35	2	2			100	3	3
		40					80					40					50		
		50					30					50					60		
		60					35	2	2			60					70		
		15	1				40					70	3	3			80		
		25					50					80					90		
		30					60					100					100		
		35	2				70					60					50		
		40					80					70	3	3			60		
		50					30					80					70		
		60					40					100					80		
		15	1				50					60					90		
		25					60					70	3	3			100		
		30					70					80					50		
		35	2				80					90					60		
		40					30					100					70		
		50					40					60					80		
		60					50					70	3	3			90		
		15	1				60					80					100		
		25					70					90					50		
		30					80					100					60		
		35	2				30					60					70		
		40					40					70	3	3			80		
		50					50					80					90		
		60					60					90					100		

> >

Esempio d'ordine: SOB = d x D x L
Order example:
Bestellbeispiel:

BUSSOLA GUIDA TIPO "SOB"

Materiale: bronzo e grafite

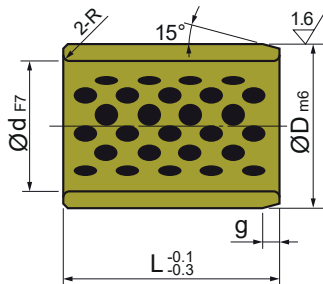
Material: bronze graphite

Werkstoff: bronze graphit

Durezza: HB 210÷240

Hardness:

Härte:



<<

d	D	L	R	g
80	96	20	1	2
		40	2	2
		50		
		60		
		70	3	3
	80			
	100			
	120			
	100	40	2	2
		50		
60				
70				
80		3	3	
85	100	25	2	2
		60	3	3
		80		
		30	2	2
		50		
90	110	60		
		70		
		80	3	3
		90		
		100		
		120		

d	D	L	R	g
100	120	115	3	3
		40	2	2
		50		
		60		
		70		
		80	3	3
		90		
		100		
		120		
		140		
110	130	50		
		70		
		80	3	3
		100		
		120		
120	140	70		
		80		
		90		
		100	3	3
		120		
125	145	100	3	3
		120		
		80		
130	150	100	3	3
		130		

d	D	L	R	g
140	160	100	3	3
		140		
150	170	80		
		100	3	3
		150		4
160	180	80		
		100	3	3
170	190	150		
		100	3	3
180	200	150		
		100	3	3
		150		
190	210	100	3	3
		150		
200	230	150	3	3
		200		

Esempio d'ordine: SOB = d x D x L

Order example:

Bestellbeispiel:

GUIDA PIANA AUTOLUBRIFICANTE

Materiale: bronzo e grafite

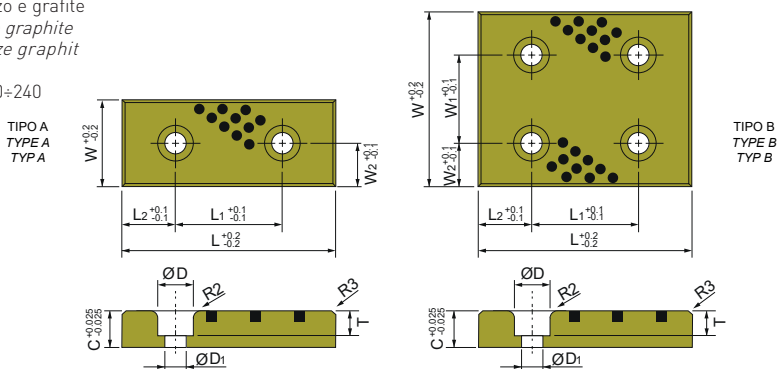
Material: bronze graphite

Werkstoff: bronze graphit

Durezza: HB 210÷240

Hardness:

Härte:



W	L	C	L1	L2	W1	W2	D	D1	T	Tipo type
28	75	10	45	15	-	14	17,5	11	7,4	A
	100		50	25						
	125		75	25						
	150		100	25						
38	75	10	45	15	-	19	17,5	11	7,4	A
	100		50	25						
	125		75	25						
	150		100	25						
48	75	10	45	15	-	24	17,5	11	7,4	A
	100		50	25						
	125		75	25						
	150		100	25						
58	75	10	45	15	-	29	17,5	11	7,4	A
	100		50	25						
	125		75	25						
	150		100	25						
75	75	10	45	15	-	37,5	17,5	11	7,4	A
	100		50	25						
	125		75	25						
	150		100	25						
100	100	10	50	25	50	25	17,5	11	7,4	B
	125		75	25						
	150		100	25						
	200		150	25						
125	150	10	100	25	50	37,5	17,5	11	7,4	B
	200		150	25						
	250		200	25						
	150		100	25						
150	200	10	150	25	100	25	17,5	11	7,4	B
	250		200	25						

W	L	C	L1	L2	W1	W2	D	D1	T	Tipo type
28	75	20	45	15	-	14	17,5	11	12	A
	100		50	25						
	125		75	25						
	150		100	25						
38	75	20	45	15	-	19	17,5	11	12	A
	100		50	25						
	125		75	25						
	150		100	25						
48	75	20	45	15	-	24	17,5	11	12	A
	100		50	25						
	125		75	25						
	150		100	25						
58	75	20	45	15	-	29	17,5	11	12	A
	100		50	25						
	125		75	25						
	150		100	25						
75	150	20	100	25	-	37,5	17,5	11	12	A
	200		150	25						
	100		50	25						
	125		75	25						
100	125	20	75	25	50	25	17,5	11	12	B
	150		100	25						
	200		150	25						
	250		200	25						
125	125	20	75	25	50	37,5	17,5	11	12	B
	150		100	25						
	200		150	25						
	250		200	25						
150	150	20	100	25	100	25	17,5	11	12	B
	200		150	25						
	250		200	25						
	300		250	25						

Esempio d'ordine: TGPBG = W x L x C

Order example:

Bestellbeispiel:

GUIDA A "L" AUTOLUBRIFICANTE

Materiale: bronzo e grafite

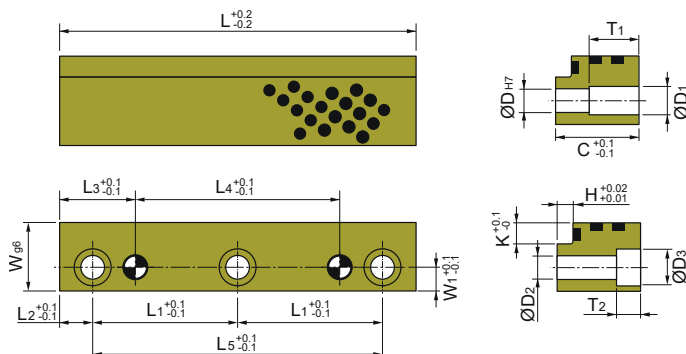
Material: bronze graphite

Werkstoff: bronze graphit

Durezza: HB 210÷240

Hardness:

Härte:



W	C	L	L1	L2	L3	L4	L5	W1	T1	T2	K	H	D	D1	D2	D3
16	11	50	-			14	34									
		71	-	8	18	35	55	9,5	-	5,7	5	4	5	-	5,5	10
		90	37			54	74									
20	19	80	-			40	64									
		100	-	8	20	60	84	12	9,5	6,8	5	5	6	7	6,6	11
		125	54,5			85	109									
25	31	100	-			50	80									
		125	-	10	25	75	105	15,5	19	9	6	6	8	9	9	15
		160	70			110	140									
30	49	125	-			55	95									
		160	-	15	35	90	130	18	34	11	7	8	10	12	11	18
		200	85			130	170									

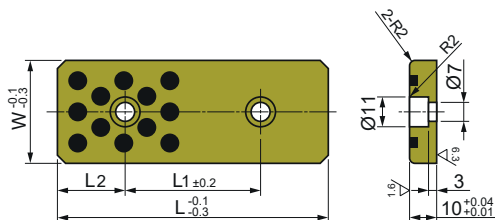
Esempio d'ordine: TGLBG = W x C x L

Order example:

Bestellbeispiel:

Materiale: bronzo e grafite
Material: bronze graphite
Werkstoff: bronze graphit

Durezza: HB 210÷240
Hardness:
Härte:



W	L	L1	L2
18	75	45	15
	100	50	25
	125	75	25
	150	100	25
28	75	45	15
	100	50	25
	125	75	25
	150	100	25
38	75	45	15
	100	50	25
	125	75	25
	150	100	25
48	75	45	15
	100	50	25
	125	75	25
	150	100	25

Esempio d'ordine: SOML = W x L

Order example:

Bestellbeispiel:

PIASTRA TIPO "SOLP"

Materiale: bronzo e grafite

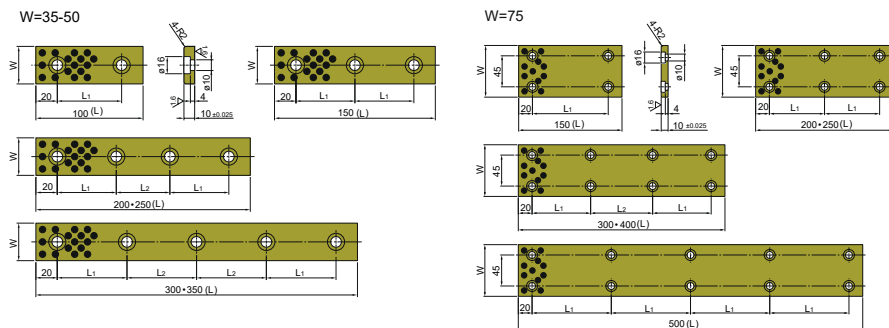
Material: bronze graphite

Werkstoff: bronze graphit

Durezza: HB 210÷240

Hardness:

Härte:



W	L	L1	L2	Nr. viti / nr. screw
35	100	60	-	2
	150	55	-	3
	200	55	50	4
	250	70	70	4
	300	65	65	5
50	350	80	75	5
	100	60	-	2
	150	55	-	3
	200	55	50	4
	250	70	70	4
75	300	65	65	5
	350	80	75	5
	150	110	-	4
	200	80	-	6
	250	105	-	6
	300	85	90	8
75	400	120	120	8
	500	115	-	10

Esempio d'ordine: SOLP = W x L

Order example:

Bestellbeispiel:

PIASTRE TIPO "TLP"

Materiale: bronzo e grafite

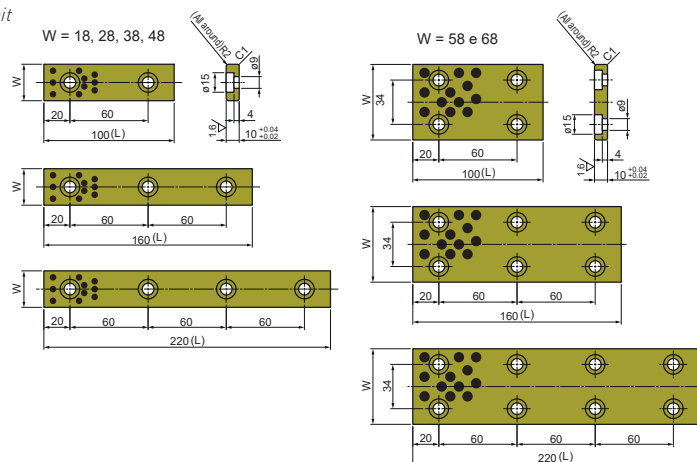
Material: bronze graphite

Werkstoff: bronze graphit

Durezza: HB 210÷240

Hardness:

Härte:



Codice	W	L
TLP-18x100x10	18	100
TLP-18x160x10		160
TLP-18x220x10		220
TLP-28x100x10	28	100
TLP-28x160x10		160
TLP-28x220x10		220
TLP-38x100x10	38	100
TLP-38x160x10		160
TLP-38x220x10		220
TLP-48x100x10	48	100
TLP-48x160x10		160
TLP-48x220x10		220
TLP-58x100x10	58	100
TLP-58x160x10		160
TLP-58x220x10		220
TLP-68x100x10	68	100
TLP-68x160x10		160
TLP-68x220x10		220

Esempio d'ordine: Codice

Order example:

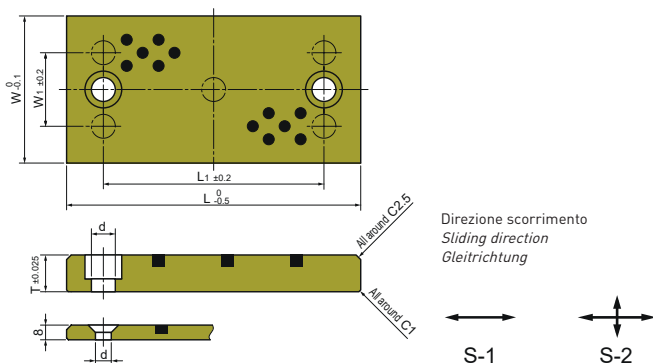
Bestellbeispiel:

Slide plate type "SOD"
Schieberplatte typ "SOD"

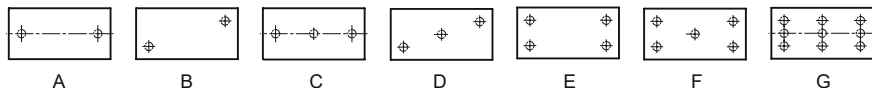
PIASTRA TIPO "SOD"

Materiale: bronzo e grafite
Material: bronze graphite
Werkstoff: bronze graphit

Durezza: HB 210÷240
Hardness:
Härte:



Posizione fori / hole position / loch position



Codice	T	L	W	W1	L1	Nr. viti Nr. screw	Viti DIN912	Posiz. fori Holes posit.	Dir. scorrimento Sliding direction
SOD-301	8	100	40	-	60	2	M8	A	S-1
SOD-302		160	40	-	120	2		A	S-1
SOD-303		250	40	-	210	3		C	S-1
SOD-304	12	100	30	-	60	2	M8	A	S-1
SOD-305		160	30	-	120	2		A	S-1
SOD-306		250	30	-	210	3		C	S-1
SOD-307		100	40	-	60	2		A	S-1
SOD-308		160	40	-	120	2		A	S-1
SOD-309		250	40	-	210	3		C	S-1
SOD-310		100	80	40	60	2		B	S-2
SOD-311		160	80	40	120	4		E	S-2
SOD-312		250	80	40	210	5		F	S-1
SOD-313		16	100	40	-	60		2	M10
SOD-314	160		40	-	120	2	A	S-1	
SOD-315	250		40	-	210	3	C	S-1	
SOD-316	100		60	30	60	2	B	S-2	
SOD-317	160		60	30	120	2	B	S-1	
SOD-318	250		60	30	210	3	D	S-1	
SOD-319	100		100	60	60	2	B	S-2	
SOD-320	160		100	60	120	4	E	S-2	
SOD-321	250		100	60	210	6	G	S-1	
SOD-322	20		100	50	20	60	2	M12	
SOD-323		160	50	20	120	2	B		S-1
SOD-324		250	50	20	210	3	D		S-1
SOD-325		100	80	40	60	2	B		S-2
SOD-326		160	80	40	120	4	E		S-2
SOD-327		250	80	40	210	5	F		S-1
SOD-328		100	125	85	60	4	E		S-2
SOD-329		160	125	85	120	4	E		S-2
SOD-330		250	125	85	210	6	G		S-1

Esempio d'ordine: Codice
Order example:
Bestellbeispiel:

Materiale: bronzo e grafite

Material: bronze graphite

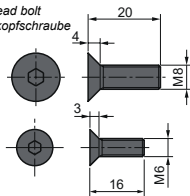
Werkstoff: bronze graphit

Durezza: HB 210÷240

Hardness:

Härte:

Vite testa svasata
Flat head bolt
Flachkopfschraube



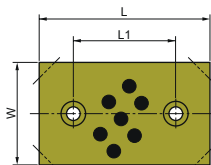
Direzione scorrimento
Sliding direction
Gleitrichtung



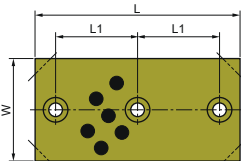
Diametro filetto
Thread diameter
+ 4 mm o più



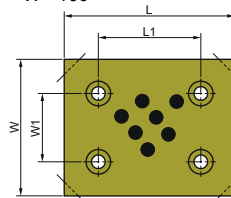
W= da 18 a 38 L= da 50 a 100
W= 48 L= da 75 a 125



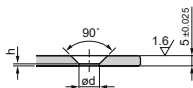
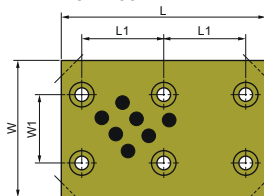
W= da 18 a 48 L= 150



W= 75 L= da 75 a 125
W= 100 L= da 100 a 125



W= 75 e 100 L= 150



W	L	W1	L1	d	h	Viti Mounting bolt
18	50	-	20	6,5	1,5	M6
	75		45			
	100		70			
	150		60			
28	50	-	20	10	0,8	M8
	75		45			
	100		70			
	150		60			
38	50	-	20	10	0,8	M8
	75		45			
	100		70			
	150		60			
48	75	-	45	10	0,8	M8
	100		70			
	125		95			
	150		60			
75	75	45	45	10	0,8	M8
	100		70			
	125		95			
	150		60			
100	100	70	70	10	0,8	M8
	125		95			
	150		60			

Esempio d'ordine: UWP = W x L

Order example:

Bestellbeispiel:

Slide plate type "SOVP"
Schieberplatte typ "SOVP"

PIASTRA TIPO "SOVP"

Materiale: bronzo e grafite

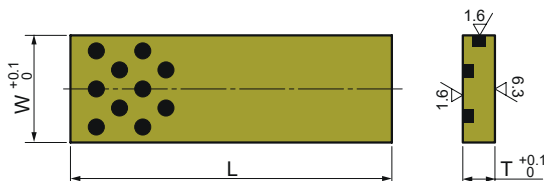
Material: bronze graphite

Werkstoff: bronze graphit

Durezza: HB 210+240

Hardness:

Härte:



Codice	W	T	L
SOVP-1x305	25	5,3	305
SOVP-2x305	30	6,3	305
SOVP-3x605	40	8,3	605
SOVP-4x605	35	10,3	605
SOVP-5x605	50	10,3	605
SOVP-6x605	40	12,3	605
SOVP-7x605	80	12,3	605
SOVP-8x605	60	16,3	605
SOVP-9x605	80	20,3	605
SOVP-10x605	100	20,3	605

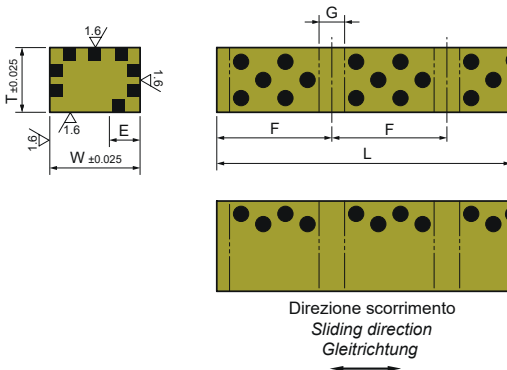
Esempio d'ordine: Codice

Order example:

Bestellbeispiel:

Materiale: bronzo e grafite
Material: bronze graphite
Werkstoff: bronze graphit

Durezza: HB 210÷240
Hardness:
Härte:



T	W	L	E	F	G
10,3	15,3	75	6	25	6
		100			
		125			
		150			
		175			
		200			
		225			
250					
15,3	25,3	105	8	35	8
		140			
		175			
		210			
		245			
		280			
		315			
350					
25,3	35,3	135	12	45	10
		180			
		225			
		270			
		315			
		360			
		405			
35,3	45,3	165	16	55	12
		220			
		275			
		330			
		385			
		440			

Esempio d'ordine: VKL = T x W x L
Order example:
Bestellbeispiel:

Slide plate type "SESW-SESWT"
Schieberplatte typ "SESW-SESWT"

PIASTRA TIPO "SESW-SESWT"

Materiale: bronzo e grafite

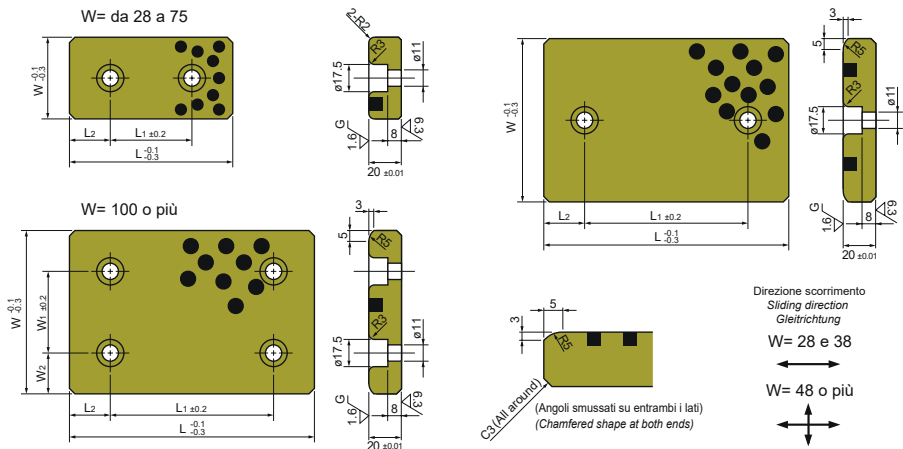
Material: bronze graphite

Werkstoff: bronze graphit

Durezza: HB 210÷240

Hardness:

Härte:



BRONZO E GRAFITE
Bronze graphite
Bronze graphit

W	L		W1	W2	L1	L2
	SESW	SESWT				
28	75	-	-	-	45	15
	100	-	-	-	50	25
	150	-	-	-	100	25
38	75	-	-	-	45	15
	100	-	-	-	50	25
	150	-	-	-	100	25
48	75	-	-	-	45	15
	100	-	-	-	50	25
	125	-	-	-	75	25
	150	-	-	-	100	25
58	200	-	-	-	150	25
	75	-	-	-	45	15
	100	-	-	-	50	25
75	150	-	-	-	100	25
	75	-	-	-	25	25
	100	-	-	-	50	25
	125	-	-	-	75	25
75	150	-	-	-	100	25
	200	-	-	-	150	25

W	L		W1	W2	L1	L2	
	SESW	SESWT					
100	100	100	50	25	50	25	
	125	125				75	25
	150	150				100	25
	200	200				150	25
	250	250				200	25
125	300	300	50	37.5	200	50	
	125	125				75	25
	150	150				100	25
	200	200				150	25
	250	250				200	25
	300	300				200	50
150	350	350	100	25	150	75	
	150	150				100	25
	200	200				150	25
	250	250				200	25

Esempio d'ordine: SESW-SESWT = W x L

Order example:

Bestellbeispiel:

SGLW SGLWN

Slide plate type "SGLW-SGLWN"
Schieberplatte typ "SGLW-SGLWN"

PIASTRA TIPO "SGLW-SGLWN"

Materiale: bronzo e grafite

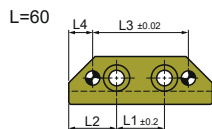
Material: bronze graphite

Werkstoff: bronze graphite

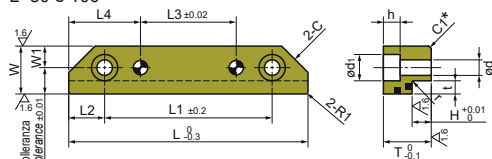
Durezza: HB 210÷240

Hardness:

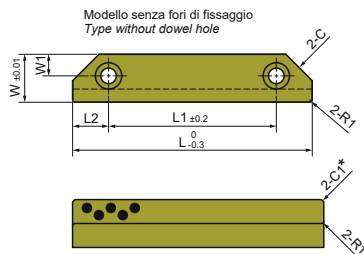
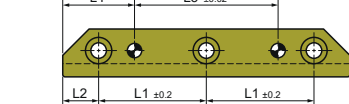
Härte:



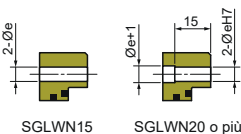
L=80 e 100



L ≥ 120



Modello con foro di fissaggio e specifiche dei fori
Type with dowel hole and dowel hole specification



SGLW (senza fori di fissaggio) / *(without dowel hole)*

SGLWN (con fori di fissaggio) / *(with dowel hole)*

W	L	W1	L1	L2	L3	L4	C	T	H	t	r	d	d1	h	e
15	60		20	20	40	10									
	80	6	55	12,5	35	22,5	9	15	8	4,5	0,5	5,5	9,5	6	6
	100		75	12,5	55	22,5									
20	60		20	20	40	10									
	80	9	50	15	20	30	11	20	8	5,5	0,5	6,5	11	7	6
	100		70	15	40	30									
	120		45	15	60	30									
80	45		17,5	20	30										
25	100	9	65	17,5	40	30	13	25	10	7,5	0,8	9	14	9	8
	120		42,5	17,5	60	30									
	140		52,5	17,5	80	30									
	120		40	20	40	40									
30	140	11	50	20	60	40	16	30	15	11	0,8	11	18	11	8
	160		60	20	80	40									
	180		70	20	100	40									

Esempio d'ordine: SGLW-SGLWN = W x L

Order example:

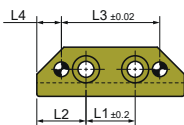
Bestellbeispiel:

PIASTRA TIPO "SGLXS"

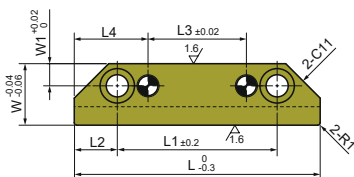
Materiale: bronzo e grafite
Material: bronze graphite
Werkstoff: bronze graphit

Durezza: HB 210+240
Hardness:
Härte:

L=60



L=80 e 100

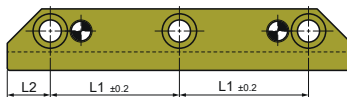


Fori di fissaggio
Dowel hole

W=20 $\varnothing 6^{+0,012}_0$
W=25 e 30 $\varnothing 8^{+0,015}_0$



L= da 120 a 200



W	L	T	W1	L1	L2	L3	L4	H	t	r
20	60	23	9	20	20	40	10	8	5,5	0,5
	80			50	15	20	30			
	100			70	15	40	30			
	120			45	15	60	30			
	140			55	15	80	30			
	160	65	15	100	30					
25	80	28	9	45	17,5	20	30	10	7,5	0,8
	100			65	17,5	40	30			
	120			42,5	17,5	60	30			
	140			52,5	17,5	80	30			
	160			62,5	17,5	100	30			
	180			72,5	17,5	120	30			
	200	82,5	17,5	140	30					
30	100	43	11	60	20	20	40	15	11	0,8
	120			40	20	40	40			
	140			50	20	60	40			
	160			60	20	80	40			
	180			70	20	100	40			
	200			80	20	120	40			

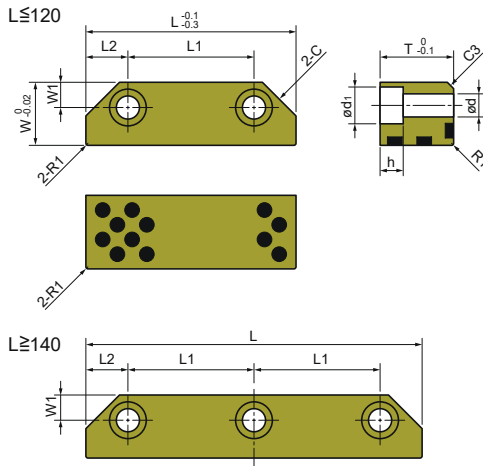
Esempio d'ordine: SGLXS = W x L x T

Order example:

Bestellbeispiel:

Materiale: bronzo e grafite
Material: bronze graphite
Werkstoff: bronze graphit

Durezza: HB 210÷240
Hardness:
Härte:



W	L	T	L2	L1	W1	d	d1	h	C
20	80	20 25	15	50	9	6,5	11	7	11
	100		15	70					
	120		15	90					
	140		15	55					
	160		15	65					
25	80	25 30	17,5	45	10	9	14	9	13
	100		17,5	65					
	120		17,5	85					
	140		20	50					
	160		20	60					
30	100	30 35	20	60	12	11	17,5	11	16
	120		20	80					
	140		20	50					
	160		20	60					
	180		20	70					

Esempio d'ordine: SGBT = W x L x T

Order example:

Bestellbeispiel:

Slide plate type "SGBD"
Schieberplatte typ "SGBD"

PIASTRA TIPO "SGBD"

Materiale: bronzo e grafite

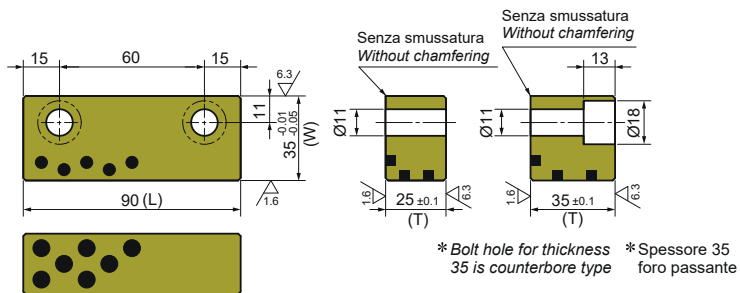
Material: bronze graphite

Werkstoff: bronze graphit

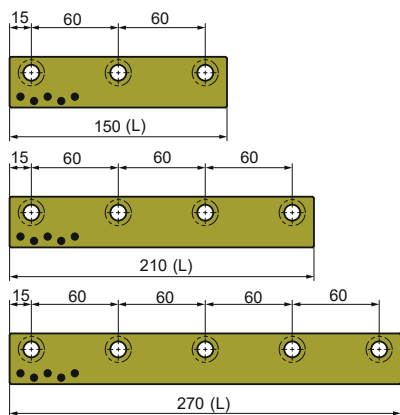
Durezza: HB 210÷240

Hardness:

Härte:

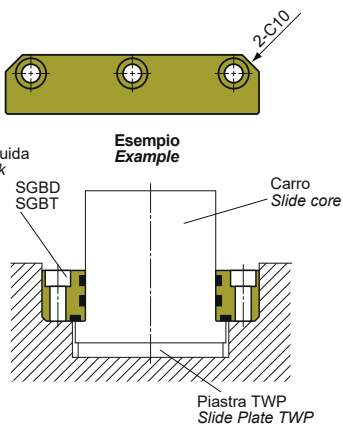


BRONZO E GRAFITE
Bronze graphite
Bronze graphit



Blocco di guida
Guide block

Esempio
Example



W	L	T
35	90	25 35
	150	
	210	
	270	

Esempio d'ordine: SGBD = W x L x T

Order example:

Bestellbeispiel:

Materiale: bronzo e grafite

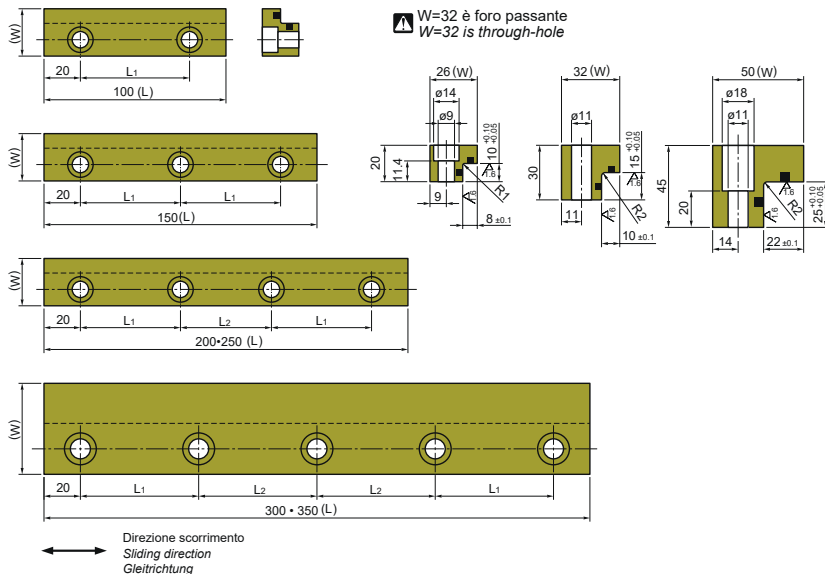
Material: bronze graphite

Werkstoff: bronze graphit

Durezza: HB 210÷240

Hardness:

Härte:



W	L	Posizione vite / Bolt position		Viti / Mounting bolt	
		L1	L2	Misura / Size	Quantità / Q.ty
15	50	30	-	M6	2
	100	60	-		2
	150	55	-		3
	200	55	50		4
20	50	30	-	M8	2
	100	60	-		2
	150	55	-		3
	200	55	50		4
26	100	60	-	M8	2
	150	55	-		3
	200	55	50		4
	400	75	70		6
32	100	60	-	M10	2
	150	55	-		3
	200	55	50		4
	250	70	70		4
50	400	75	70		6
	200	55	50	M10	4
	250	70	70		4
	300	65	65		5
	350	80	75		5
500	80	75	7		

Esempio d'ordine: SOL = W x L

Order example:

Bestellbeispiel:

Slide plate type "SOVL"
Schieberplatte typ "SOVL"

PIASTRA TIPO "SOVL"

Materiale: bronzo e grafite

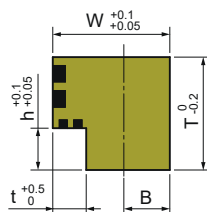
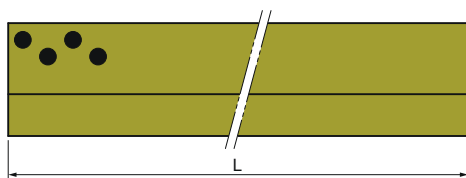
Material: bronze graphite

Werkstoff: bronze graphit

Durezza: HB 210÷240

Hardness:

Härte:



Codice	L	W	T	h	t	B
SOVL-0x205	205	15	12	5	5	6
SOVL-1x205	205	20	17	7	5	7,5
SOVL-1x320	320					
SOVL-2x205	205	20	22	7	5	7,5
SOVL-2x320	320					
SOVL-3x205	205	28	27	10	8	11
SOVL-3x320	320					
SOVL-3x605	605					
SOVL-4x205	205	28	36	10	8	11
SOVL-4x320	320					
SOVL-4x605	605					
SOVL-5x205	205	28	46	10	8	11
SOVL-5x320	320					
SOVL-5x605	605					
SOVL-6x205	205	40	66	22	12	14
SOVL-6x320	320					
SOVL-6x605	605					
SOVL-7x205	205	40	86	26	12	14
SOVL-7x320	320					
SOVL-7x605	605					

Esempio d'ordine: Codice

Order example:

Bestellbeispiel:

Materiale: bronzo e grafite

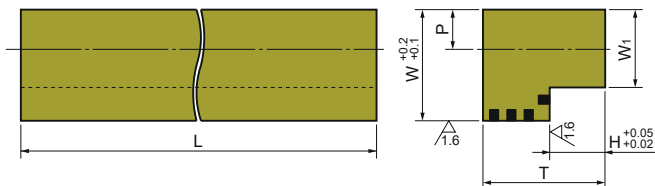
Material: bronze graphite

Werkstoff: bronze graphit

Durezza: HB 210÷240

Hardness:

Härte:



W	L	T	W1	H	Viti consigliate / recommended mounting bolt	
					P	Misura / Size
20	320	15	14,5	5	8	M8
		20		5		
		23		8		
		25		5		
25	320	28	17,5	8	10	M8
		28		10		
		33		10		
30	320	43	19	10	10	M8
		38		15		
35	605	43	23	15	12	M10
		43		15		
		53		15		
40	605	63	28	20	14	M12
		45		20		
		55		20		
		65		20		

Esempio d'ordine: SGLX = W x L x T

Order example:

Bestellbeispiel:

PIASTRA PIATTA UNIDIREZIONALE AUTOLUBRIFICANTE

Materiale: bronzo e grafite

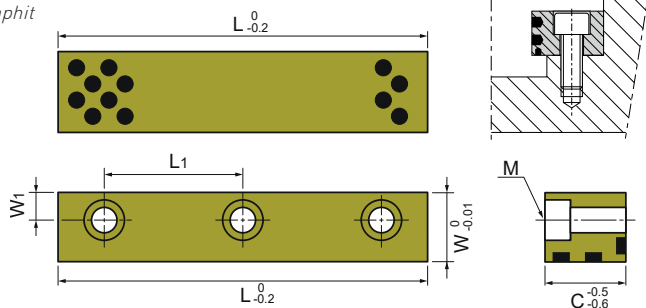
Material: bronze graphite

Werkstoff: bronze graphit

Durezza: HB 210÷240

Hardness:

Härte:



W	C	L	L1	W1	M	Nr. fori Nr. holes
16	6	40	24	6	M5	2
		50	34			2
		63	47			2
		80	32			3
16	8	50	34	6	M5	2
		63	47			2
		80	32			3
		100	42			3
20	12	63	43	9	M6	2
		80	60			2
		100	40			3
		125	52,5			3
20	16	80	60	9	M6	2
		100	40			3
		125	52,5			3
		160	70			3
25	22	100	76	11	M8	2
		125	50,5			3
		160	68			3
		200	58			4
25	30	125	50,5	11	M8	3
		160	68			3
		200	58			4
		250	74			4
32	38	160	64	14	M10	3
		200	84			3
		250	72			4
		315	93			4

Esempio d'ordine: T3143 = W x C x L

Order example:

Bestellbeispiel:

T3119

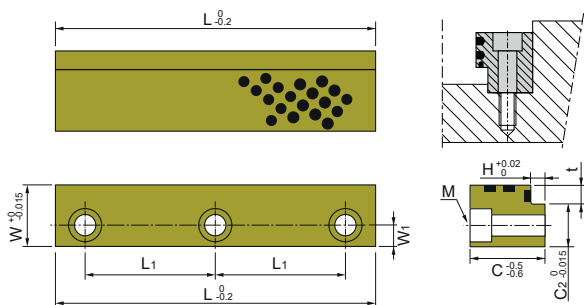
One-sided self-lubricating flat slide plate
Schieberplatte einseitig, wartungsfrei

tecno
www.tecnos.it

PIASTRA PIATTA UNIDIREZIONALE AUTOLUBRIFICANTE

Materiale: bronzo e grafite
Material: bronze graphite
Werkstoff: bronze graphit

Durezza: HB 210÷240
Hardness:
Härte:



C	H	L	L1	W	W1	C2	M	t	Nr. fori Nr. holes
12	6	40	24	16	6	12	M5	4	2
		50	34						2
		63	47						2
		80	32						3
16	8	50	34	16	6	11	M5	5	2
		63	47						2
		80	32						3
		100	42						3
20	8	63	43	20	9	15	M6	5	2
		80	60						2
		100	40						3
		125	52,5						3
20	11	63	43	20	9	15	M6	5	2
		80	60						2
		100	40						3
		125	52,5						3
25	8	80	60	20	9	15	M6	5	2
		100	40						3
		125	52,5						3
		160	70						3
25	13	80	60	20	9	15	M6	5	2
		100	40						3
		125	52,5						3
		160	70						3
32	10	100	76	25	11	19	M8	6	2
		125	50,5						3
		160	68						3
		200	58						4
32	16	100	76	25	11	19	M8	6	2
		125	50,5						3
		160	68						3
		200	58						4
40	10	125	50,5	25	11	19	M8	6	3
		160	68						3
		200	58						4
		250	74						4
40	16	125	50,5	25	11	19	M8	6	3
		160	68						3
		200	58						4
		250	74						4
50	12	160	64	32	14	24	M10	8	3
		200	84						3
		250	72						4
		315	93						4
50	20	160	64	32	14	24	M10	8	3
		200	84						3
		250	72						4
		315	93						4

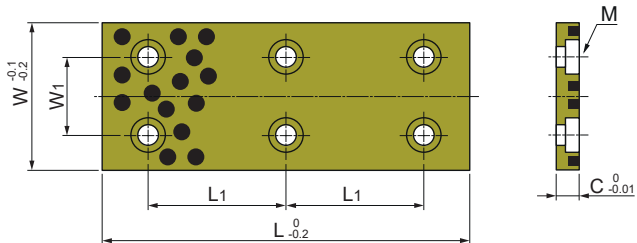
Esempio d'ordine: T3119 = C x H x L

Order example:
Bestellbeispiel:

PIASTRA DI SCORRIMENTO AUTOLUBRIFICANTE

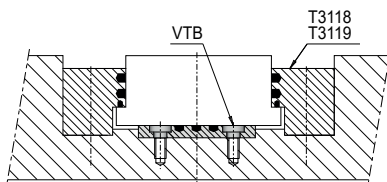
Materiale: bronzo e grafite
Material: bronze graphite
Werkstoff: bronze graphit

Durezza: HB 210+240
Hardness:
Härte:



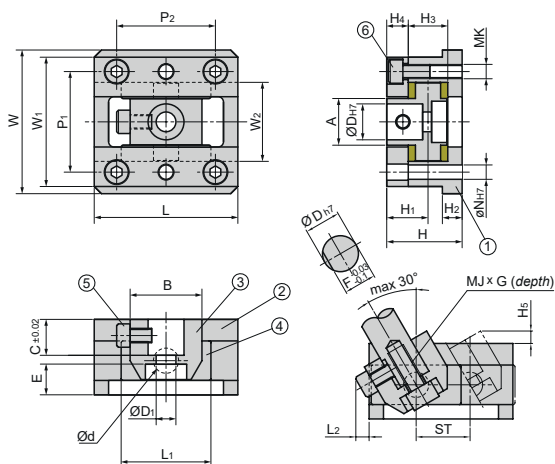
W	C	L	L1	W1	M	Nr. fori Nr. holes
12	5	25	14	-	M4	2
		32	16			2
		40	24			2
		50	34			2
		63	47			2
		80	32			3
16	5	100	40	-	M4	3
		32	16			2
		40	24			2
		50	34			2
		63	47			2
		80	32			3
20	6	100	40	-	M5	3
		125	52			3
		32	16			2
		40	20			2
		50	30			2
		63	43			2
25	6	80	60	-	M5	2
		100	40			3
		125	50			3
		32	16			2
		40	20			2
		50	26			2
32	6	63	39	-	M5	2
		80	56			2
		100	76			2
		125	50,5			3
		160	68			3
		200	88			3

W	C	L	L1	W1	M	Nr. fori Nr. holes
40	6	50	26	20	M5	4
		63	39			4
		80	56			4
		100	76			4
		125	50,5			6
		160	68			6
50	8	200	58	24	M6	8
		63	39			4
		80	56			4
		100	76			4
		125	50,5			6
		160	68			6
63	8	200	58	35	M6	8
		250	74			8
		80	56			4
		100	76			4
		125	50,5			6
		160	68			6
80	8	200	58	50	M6	8
		250	72			8
		315	93			8
		100	76			4
		125	50,5			6
		160	68			6



Esempio d'ordine: T3176 = W x C x L
Order example:
Bestellbeispiel:

N.	Descrizione / description	Q.tà Q.ty	Materiale / material
1	Base a slitta / Slide base	1	S45C Tufftridid ["I" C45 "A" 1045]
2	Piastra superiore / Upper Plate	2	S45C Tufftridid ["I" C45 "A" 1045]
3	Supporto del perno / Pin Holder	1	S45C Tufftridid ["I" C45 "A" 1045]
4	Piastra di scorrimento / Slide plate	2	Bronzo con grafite / Bronze with graphite [SO#50 SP2]
5	Vite a testa piatta / Socket head screw	1	SCM435 [Special] ["I" 34CrMo4 "A" 4137]
6	Vite a testa piatta / Socket head screw	4	SCM435 [Special] ["I" 34CrMo4 "A" 4137]



Tolleranza non specificata
Tolerance not specified: DIN ISO 2768 - middle

D	d	D1	A	B	C	E	F	MJ	G	H	H1	H2	H3	H4	H5	L	L1	L2	W	W1	W2	P1	P2	MK	N	ST
8	7	4,5	11	20	8	10	7	M4	8	22	12,5	5	11	7	10,5	32	20	3,6	33	30	19	24	20	M3	3	10
10	7	5,5	15	25	10	12,5	9	M5	9	27	15,5	5	15	8	11,3	45	25	4,5	45	40	25	32	30	M4	4	18
12	10	7	17	25	12	15	11	M6	10	32	18	7	16	10	4	50	30	5	57	51	31	39	35	M6	6	20
16	12	9	22	30	16	15	14,5	M8	12	36	20	8	20	10	5	65	40	5	65	58	38	46	40	M6	6	25
20	14	11	26	40	20	16	18	M10	16	42	23	11	22	12	8	80	50	5	80	72	44	56	55	M8	8	30
25	16	14	32	45	25	17	22,5	M12	20	50	28	15	26	15	8	90	55	6	93	85	52	66	65	M10	10	35
30	18	14	38	50	30	17	27	M12	25	55	30	15	30	15	9	100	60	7	101	93	60	74	70	M10	10	40
35	20	14	45	60	35	18	32	M12	30	62	35	15	34	18	10	120	75	8	120	110	70	85	80	M12	10	45
40	25	18	55	70	40	19	36	M16	35	70	40	15	44	18	12	135	85	8	130	120	80	95	90	M12	10	50
45	30	18	60	80	45	24	40	M16	40	80	45	15	50	20	14	150	95	10	140	130	90	105	110	M12	10	55

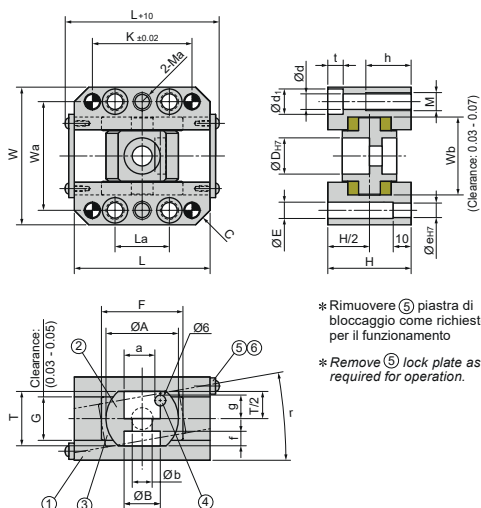
Esempio d'ordine: KOCU-S = D

Order example:

Bestellbeispiel:

CARRELLO TIPO "KOCU-F"

N.	Descrizione / description	Q.tà Q.ty	Materiale / material
1	Boccola di guida / Guide rail	2	C45
2	Supporto del perno inclinato / Inclined pin holder	1	C45
3	Piastra di scorrimento / Slide plate	2	Bronzo con grafite / Bronze with graphite
4	Blocco allentamento / Loosening lock	1	Acciaio / Steel
5	Piastra di blocco / Lock plate	2	Ferro / Iron
6	Vite a testa bombata / Round head screw	4	34CrMo4



* Rimuovere ⑤ piastra di bloccaggio come richiesto per il funzionamento

* Remove ⑤ lock plate as required for operation.

D	r	W	Wa	L	La	K	Ma	C	H	e	E	d	d1	t	h	M	Wb	A	a	B	b	g	F	f	G	T
8		41	33	44	12	25	M4	3	24	4	5	3,4	6	3,4	10	M4	24	20	7,5	10	5	6,5	25	5	13	16
10		47	38	50	16	30	M5	3	28	5	5,5	4,5	8	5	15	M5	28	20	8,5	12	6	6,5	32	4	17	16
12		53	42	60	20	40	M8	4	36	6	7	6,6	11	4,8	20	M8	31	25	10	13	7	8,5	40	5	20	20
16	0° ~ 10°	64	50	70	25	50	M8	6	40	6	6,6	6,6	11	6,5	20	M8	36	30	13	16	9	10	45	6	24	24
20		76	60	75	30	55	M10	8	46	8	9	8,6	14	8,5	25	M10	43	40	17	20	11	13	45	8	24	30
25		81	65	85	40	65	M10	8	48	8	9	8,6	14	8,5	25	M10	48	45	22	25	14	14	50	9,5	26	35
30		88	72	100	50	80	M10	8	54	8	9	8,6	14	8,5	25	M10	55	50	27	25	14	15	60	9	30	38
35		100	80	115	50	85	M12	8	60	10	11	11	18	6,5	30	M12	64	55	31	25	14	15	70	10	34	40
40		108	88	125	50	85	M12	8	65	10	11	18	7	30	M12	72	60	36	32	18	16	80	11,5	38	43	

Esempio d'ordine: KOCU-F = D x r

Order example:

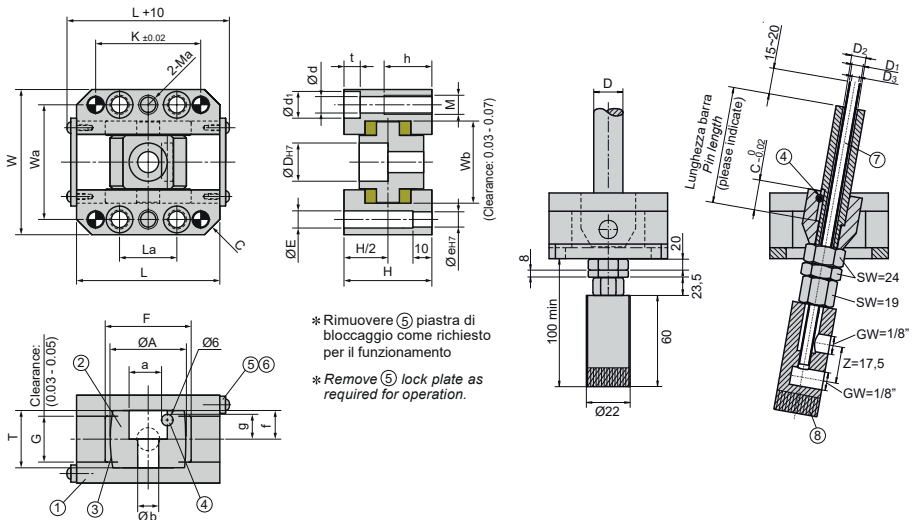
Bestellbeispiel:

Fornibili anche con gradi [r] da 11° a 20°

Also available degrees [r] 11° - 20°

Auch mit Graden erhältlich [r] 11° - 20°

N.	Descrizione / description	Q.tà Q.ty	Materiale / material
1	Boccola di guida / Guide rail	2	C45
2	Supporto del perno inclinato / Inclined pin holder	1	C45
3	Piastra di scorrimento / Slide plate	2	Bronzo con grafite / Bronze with graphite
4	Blocco allentamento / Loosening lock	1	Acciaio / Steel
5	Piastra di blocco / Lock plate	2	Ferro / Iron
6	Vite a testa bombata / Round head screw	4	34CrMo4
7	Tubo / Pipe	1	Acciaio / Steel
8	Fontana / Cascade	1	DIN CuZn25Al5



D	W	Wa	Wb	L	La	K	Ma	C	H	e	E	d	d1	t	h
20	76	60	43	75	30	55	M10	8	46	8	9	8,6	14	8,5	25
25	81	65	48	85	40	65	M10	8	48	8	9	8,6	14	8,5	25

D	M	A	a	b	g	F	f	G	T	D1	D2	D3	Lunghezza barra Pin length
20	M10	40	17	17	13	45	20	24	33	6	8	4	a richiesta / on request
25	M10	45	22	17	14	50	24,5	26	40	6	9	4	a richiesta / on request

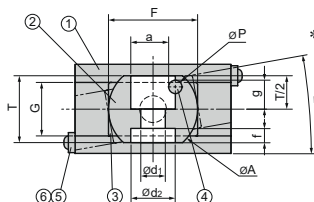
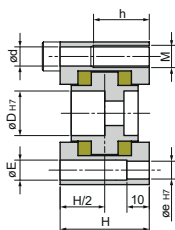
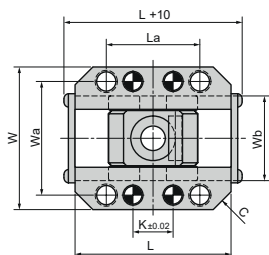
Esempio d'ordine: KOCU-FKT = D

Order example:

Bestellbeispiel:

CARRELLO TIPO "RCSUF"

N.	Descrizione / description	Q.tà Q.ty	Materiale / material
1	Boccola di guida / Guide rail	2	C45
2	Supporto del perno inclinato / Inclined pin holder	1	C45
3	Piastra di scorrimento / Slide plate	2	Bronzo con grafite / Bronze with graphite
4	Blocco allentamento / Loosening lock	1	Acciaio / Steel
5	Piastra di blocco / Lock plate	2	Ferro / Iron
6	Vite a testa bombata / Round head screw	4	34CrMo4



* Rimuovere ⑤ piastra di bloccaggio come richiesto per il funzionamento

* Remove ⑤ lock plate as required for operation

D	11° ~ 15°	16° ~ 20°
10	-	-
12	-	-
16	41	48
20	47	55
25	52	61
30	62	72
35	70	82
40	78	90

D	r	W	Wa	L	K	La	Wb	C	d	M	h	e	E	H	T	G	F	A	p	a	g	d1	d2	f
10	0°	45	36	50	16	30	26	3	3,5	M5	14	5	6	28	16	17	28	20	3	8,5	6,5	6	10	3
12	5°	51	40	60	20	40	29	4	6,6	M8	20	6	6,6	35	20	20	36	25	4	10	8	7	12	5
16		54	44	65	18	38	33	8	6,6	M8	20	6	6,6	35	24	20	40	30	6	13	10	9	16	6
20		64	51	70	18	42	38	8	8,6	M10	25	8	9	40	30	24	40	40	6	17	13	11	20	7
25	0°	70	58	80	20	45	45	10	8,6	M10	25	8	9	44	35	26	45	45	6	22	14	14	25	9,5
30	20°	78	64	100	40	70	51	8	8,6	M10	25	8	9	54	38	30	55	50	6	27	15	14	25	9
35		92	75	115	50	85	58	8	10,6	M12	30	10	11	60	40	34	70	55	8	31	15	14	25	10
40		100	82	125	50	85	66	8	10,6	M12	30	10	11	65	43	38	70	60	8	36	16	18	32	11,5

Esempio d'ordine: RCSUF = D x r

Order example:

Bestellbeispiel:

