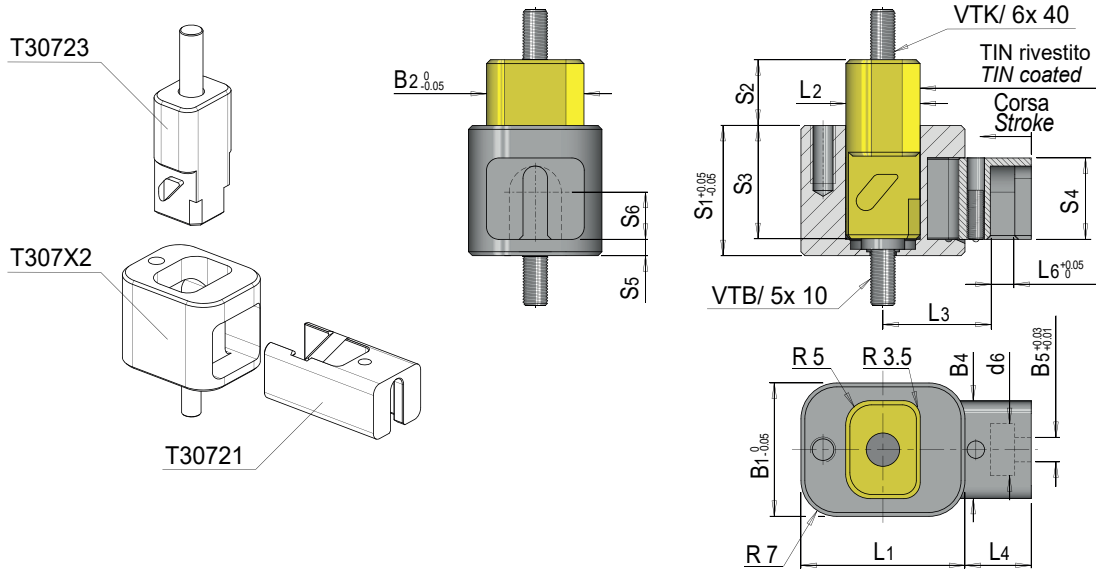


Slide unit with mechanical pull back
Schiebereinheit mit Zwangsrückzug

UNITÀ A CARRELLO CON RITIRO FORZATO

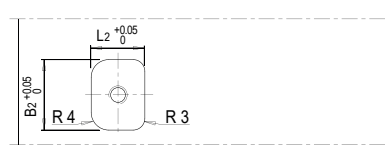
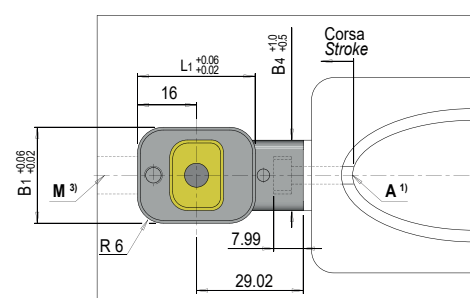
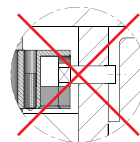
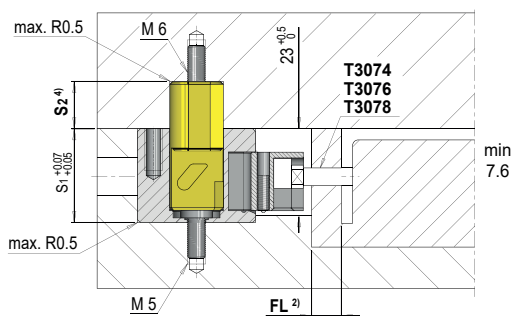
Materiale: acciaio 1.7228 e 1.2344
Material: steel 1.7228 e 1.2344
Werkstoff: stahl 1.7228 e 1.2344



Codice	Corsa Stroke	S2	S1	S3	S4	S5	S6	L1	L2	L3	L4	L6	B1	B2	B4	B5	d6
T3072-5,8x12,7	5,8	12,7	25,4	22,23	15,88	3,175	9,22	32	14,5	21,03	13,02	4,78	26	19,1	19	4,76	10,16
T3072-5,8x77,8		77,8															

Esempio d'ordine: Codice
Order example:
Bestellbeispiel:

- 1) Posizione di arresto, 275 N max. carico
Stop position, 275 N max. load;
- 2) Lung. guida min. 1,5 x diametro del nucleo
Guiding length min. 1,5 x core diameter;
- 3) Foro di montaggio per perni centrali che superano la lung. 44
Fitting hole for core pins exceeding length 44;
- 4) Prevedere il precarico sul nucleo se necessario
Provide for pre-load on the core if necessary.



ACCESSORI PER STAMPI
Accessories for mould
Zubehör für mould